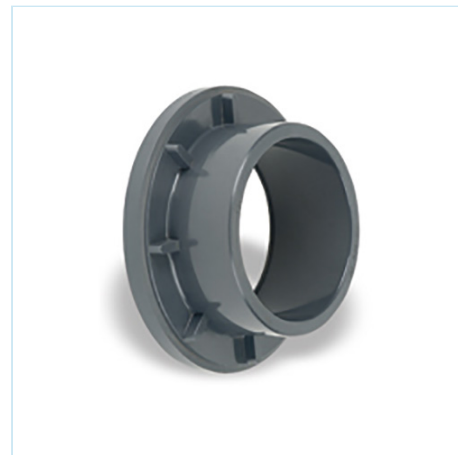


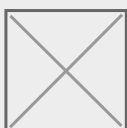


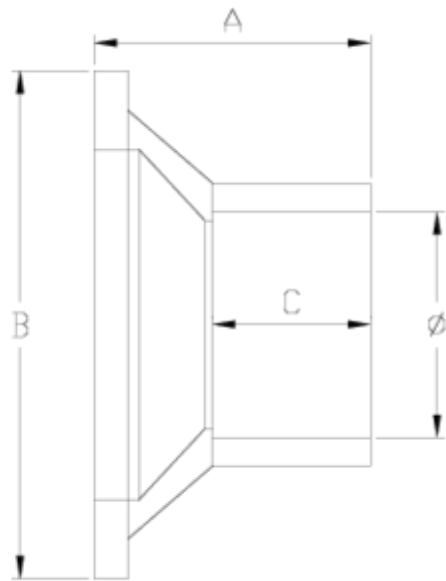
Joelho 90° Netvitc System®

Portaflanges reduzido PVC Netvitc System® enc. ITEM 20N



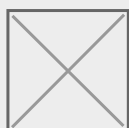
REFERÊNCIA	DESCRIÇÃO	Peso líquido	Volume (m ³)	Peso bruto	Unidades por lote
101N975	PORT NET SYSTEM PVC 63-40	0,090206	0,01553	1,77	16
101N976	PORT NET SYSTEM PVC 63-50	0,12434	0,01553	2,317	16
101N978	PORT NET SYSTEM PVC 75-63	0,1458	0,01553	2,66	16
101N979	PORT NET SYSTEM PVC 63-75	0,193956	0,01553	3,43	16
101N982	PORT NET SYSTEM PVC 125-90	0,456	0,01553	3,977	8
101N984	PORT NET SYSTEM PVC 125-110	0,5215	0,02244	4,66	8
101N985	PORT NET SYSTEM PVC 160-110	0,756825	0,02244	3,515	4
101N987	PORT NET SYSTEM PVC 160-125	0,830575	0,02243	3,81	4
101N989	PORT NET SYSTEM PVC 160-140	0,871	0,02243	4,35	4
101N991	PORT NET SYSTEM PVC 160-200	1,8758	0,04717	8,145	4
101N993	PORT NET SYSTEM PVC 200-225	2,26075	0,06347	9,873	4





ITEM 20N | Portaflanges reducido PVC Netvitc System® enc.

CÓDIGO	f	PESO	BRIDA	A	B	C	PN	MEDIDA
1N975	63-40	90	63	51	92	28	PN10	MÉTRICO
1N976	63-50	118	63	60	92	31	PN10	MÉTRICO
1N978	75-63	186	75	65	100	39	PN10	MÉTRICO
1N979	63-75	148	63	65	92	42	PN10	MÉTRICO
1N982	125-90	456	125	58	159	52	PN10	MÉTRICO
1N984	125-110	522	125	67	159	62	PN10	MÉTRICO
1N985	160-110	757	160	70	201	61	PN10	MÉTRICO
1N987	160-125	817	160	80	201	69	PN10	MÉTRICO
1N989	160-140	871	160	87	201	78	PN10	MÉTRICO
1N991	160-200	1876	160	150	201	107	PN10	MÉTRICO





ITEM 20N | Portaflanges reducido PVC Netvitc System® enc.

1N993

200-225

2200

200

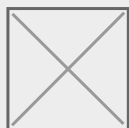
161

251

120

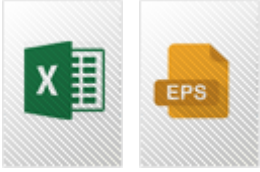
PN10

MÉTRICO





Documentação do Produto



Certificados do Produto

Certificados da Empresa

