



Netvitc System pressure fittings

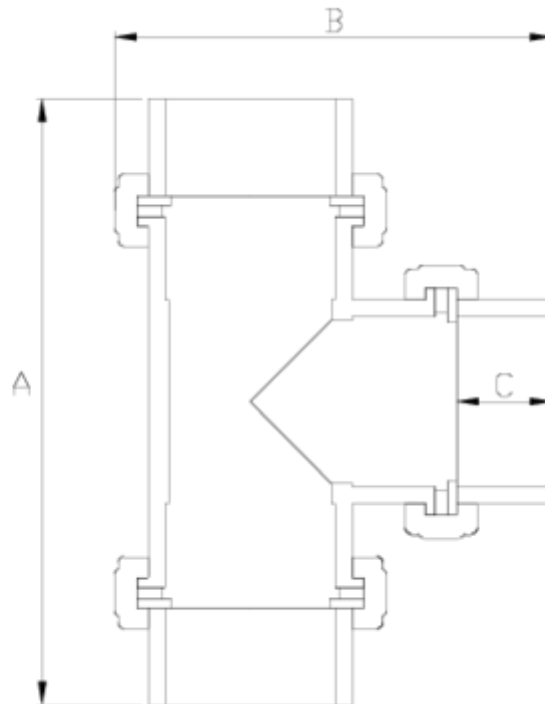
W/F PVC Netvitc System 90°

tee

ITEM 06N



REFERENCE	DESCRIPTION	Net weight	Volumen (m ³)	Gross weight	Unidades lote
101N055	NETVITC SYSTEME 90° TEE W/F 63	1,187	0,02457	5,07	4
101N057	NETVITC SYSTEME 90° TEE W/F 90	1,61	0,06347	7,23	4
101N058	NETVITC SYSTEME 90° TEE W/F 110	4,358275	0,06347	18,22	4
101N059	NETVITC SYSTEME 90° TEE W/F 125	5,67	0,08678	12,36	2
101N060	PVC SNS TEE 90° W/FLANGES SOLVENT SOCKET/O 140	6,2	0,04836	7,12	1
101N061	NETVITC SYSTEM 90° TEE W/F 160	10,1044	0,04836	10,7695	1
101N062	NETVITC SYSTEM 90° TEE W/F 200	16,6395	0,16000	18,767	1



ITEM 06N | W/F PVC Netvitec System 90° tee

CÓDIGO	Ø	PESO	BRIDA	A	B	C	PN	MEDIDA
1N055	63	1187	63	222	180.5	36	PN10	MÉTRICO
1N057	90	1610	90	323	244	52	PN10	MÉTRICO
1N058	110	4358	110	385	288	61	PN10	MÉTRICO
1N059	125	5670	125	446	323.5	69	PN10	MÉTRICO
1N060	140	6200	140	481	353	77	PN10	MÉTRICO
1N061	160	9545	160	535	402.5	86	PN10	MÉTRICO
1N062	200	16640	200	667	479	107	PN10	MÉTRICO



Product Documents



Product Certificates

Company Certificates

