



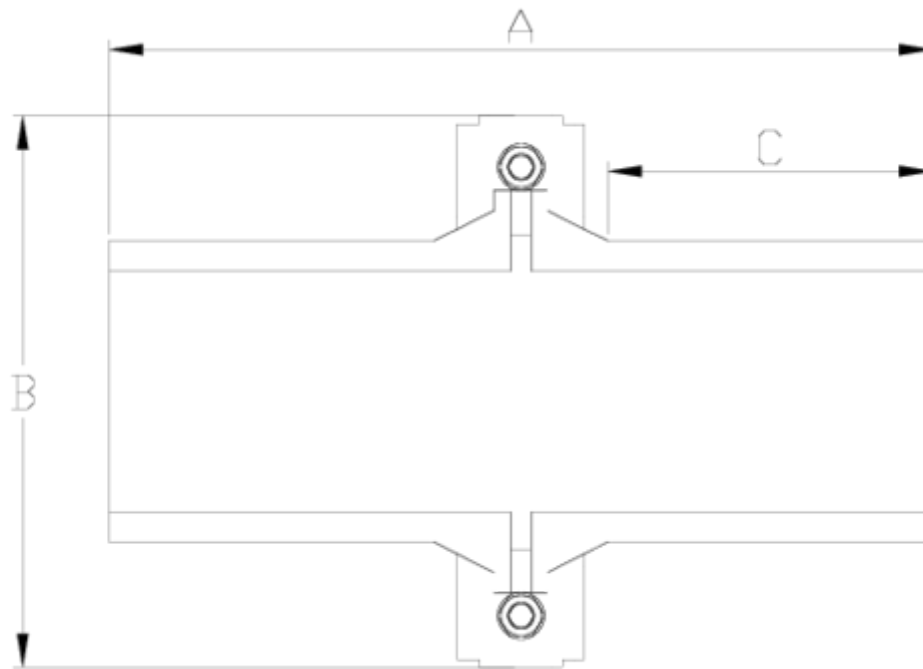
## Netvic System pressure fittings

# Union, PE-PE

## ITEM 12N

REFERENCE	DESCRIPTION	Net weight	Volumen (m <sup>3</sup> )	Gross weight	Unidades lote
1010344	NETVIC SYSTEM UNION,THERMO OUT. 50	0,447	0,01553	2,12	4
1010345	NETVIC SYSTEM UNION,THERMO OUT. 63	0,51	0,01553	2,28	4
1010346	NETVIC SYSTEM UNION,THERMO OUT. 75	0,655	0,01553	2,95	4
1010347	NETVIC SYSTEM UNION,THERMO OUT. 90	1,1166	0,03129	5,0395	4
1010348	NETVIC SYSTEM UNION,THERMO OUT. 110	1,94	0,04879	6,976	4
1010349	NETVIC SYSTEM UNION,THERMO OUT. 125	2,285	0,03682	5,12	2
1010350	NETVIC SYSTEM UNION,THERMO OUT. 140	2,795	0,04717	6,23	2
1010351	NETVIC SYSTEM UNION,THERMO OUT. 160	3,60005	0,04460	7,8941	2
1010352	NETVIC SYSTEM UNION,THERMO OUT. 200	5,709	0,03129	6,279	1
1010353	NETVIC SYSTEM UNION,THERMO OUT. 225	6,665	0,03129	7,235	1





## ITEM 12N | Union, PE-PE

CÓDIGO	f	PESO	BRIDA	A	B	C	PN	MEDIDA
10344	50	447	63	239	125	55	PN10	MÉTRICO
10345	63	510	63	241	125	88	PN10	MÉTRICO
10346	75	655	75	257	138	99	PN10	MÉTRICO
10347	90	1117	90	280	164	103	PN10	MÉTRICO
10348	110	1940	110	302	188	112	PN10	MÉTRICO
10349	125	2285	125	294	203	108	PN10	MÉTRICO
10350	140	2795	140	344	224	124	PN10	MÉTRICO
10351	160	3600	160	353	251	127	PN10	MÉTRICO
10352	200	5709	200	376	297	130	PN10	MÉTRICO
10353	225	6665	200	396	297	161	PN10	MÉTRICO



## ITEM 12N | Union, PE-PE

---



## Product Documents



## Product Certificates

## Company Certificates

