

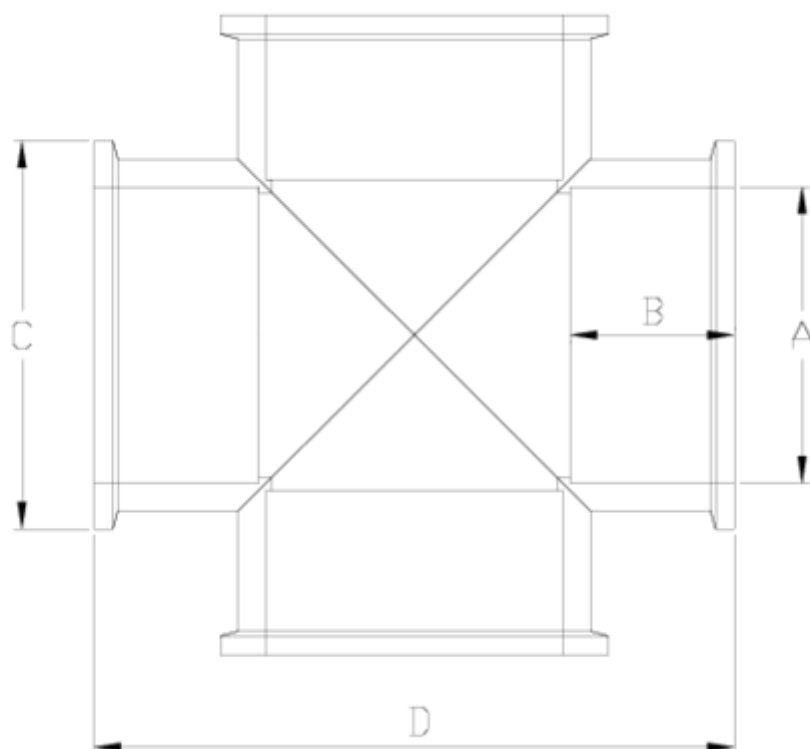


## Netvitec System pressure fittings

# PVC Netvitec System 90° cross ITEM 41N

REFERENCE	DESCRIPTION	Net weight	Volumen (m <sup>3</sup> )	Gross weight	Unidades lote
101N167	90° CROSS NETVITC SYSTEM 90	1,068	0,04880	10,68	10
101N168	90° CROSS NETVITC SYSTEM 110	1,9209	0,06150	10,525	5
101N169	90° CROSS NETVITC SYSTEM 125	2,413	0,06150	10,545	4
101N170	PVC SNS CROSS 90° 140	2,87	0,06149	6,72	2
101N171	90° CROSS NETVITC SYSTEM 160	4,48225	0,06347	9,7945	2
101N172	90° CROSS NETVITC SYSTEM 200	7,205	0,06347	8,1255	1





## ITEM 41N | PVC Netvitc System 90° cross

CÓDIGO	f	PESO	BRIDA	A	B	C	PN	MEDIDA
1N167	90	1068	90	202	121	50	PN10	MÉTRICO
1N168	110	1921	110	238	144	61	PN10	MÉTRICO
1N169	125	2406	125	276	159	70	PN10	MÉTRICO
1N170	140	2870	140	301	176	76	PN10	MÉTRICO
1N171	160	4482	160	334	201	87	PN10	MÉTRICO
1N172	200	7205	200	408	251	106	PN10	MÉTRICO



## Product Documents



## Product Certificates

## Company Certificates

