

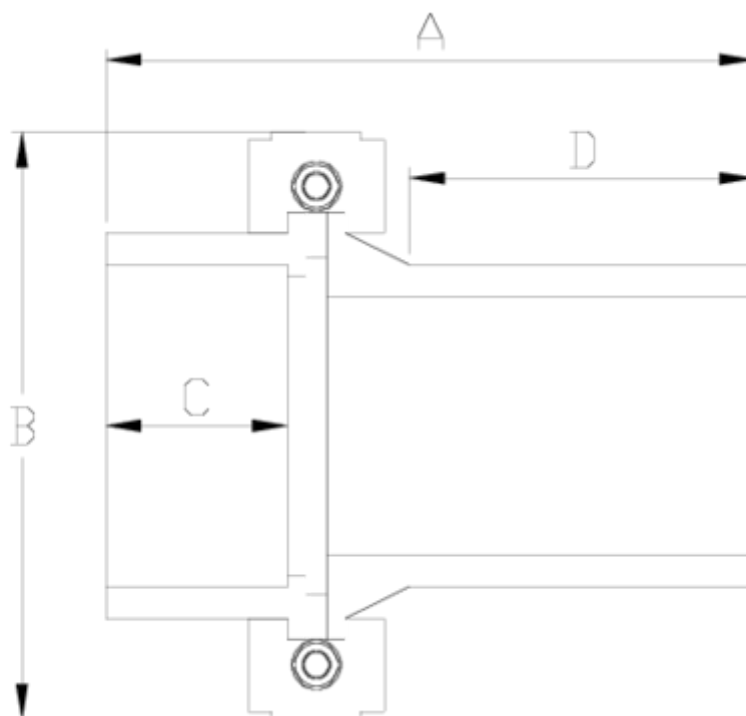


## Netvitc System pressure fittings

# PE union, plain socket-plain socket ITEM 14N



REFERENCE	DESCRIPTION	Net weight	Volumen (m <sup>3</sup> )	Gross weight	Unidades lote
1010354	NET. SYS. UNION S. SOCKET/THERMO 50	0,42	0,00892	1,87	4
1010355	NET. SYS. UNION S. SOCKET/THERMO 63	0,41565	0,00892	1,85	4
1010356	NET. SYS. UNION S. SOCKET/THERMO 75	0,559	0,01553	2,56	4
1010357	NET. SYS. UNION S. SOCKET/THERMO 90	0,9781	0,02244	4,4	4
1010358	NET. SYS. UNION S. SOCKET/THERMO 110	1,4605	0,03129	6,415	4
1010359	NET. SYS. UNION S. SOCKET/THERMO 125	2,00365	0,02244	4,495	2
1010360	NET. SYS. UNION S. SOCKET/THERMO 140	2,55615	0,02244	5,6	2
1010361	NET. SYS. UNION S. SOCKET/THERMO 160	3,45255	0,03682	7,635	2
1010362	NET. SYS. UNION S. SOCKET/THERMO 200	5,497	0,03129	6,07	1
1010363	NET. SYS. UNION S. SOCKET/THERMO 225	5,2201	0,02457	6,666	1



## ITEM 14N | PE union, plain socket-plain socket

CÓDIGO	f	PESO	BRIDA	A	B	C	D	PN	MEDIDA
10354	50	420	63	173	125	31	55	PN10	MÉTRICO
10355	63	416	63	161	125	36	88	PN10	MÉTRICO
10356	75	559	75	176	138	44	99	PN10	MÉTRICO
10357	90	978	90	197	164	52	103	PN10	MÉTRICO
10358	110	1461	110	221	188	61	112	PN10	MÉTRICO
10359	125	2004	125	229	203	69	108	PN10	MÉTRICO
10360	140	2368	140	262	224	77	124	PN10	MÉTRICO
10361	160	3453	160	274	251	86	127	PN10	MÉTRICO
10362	200	5497	200	310	297	107	130	PN10	MÉTRICO
10363	225	5220	200	363	297	120	161	PN10	MÉTRICO



## ITEM 14N | PE union, plain socket-plain socket

---



## Product Documents



## Product Certificates

## Company Certificates

