



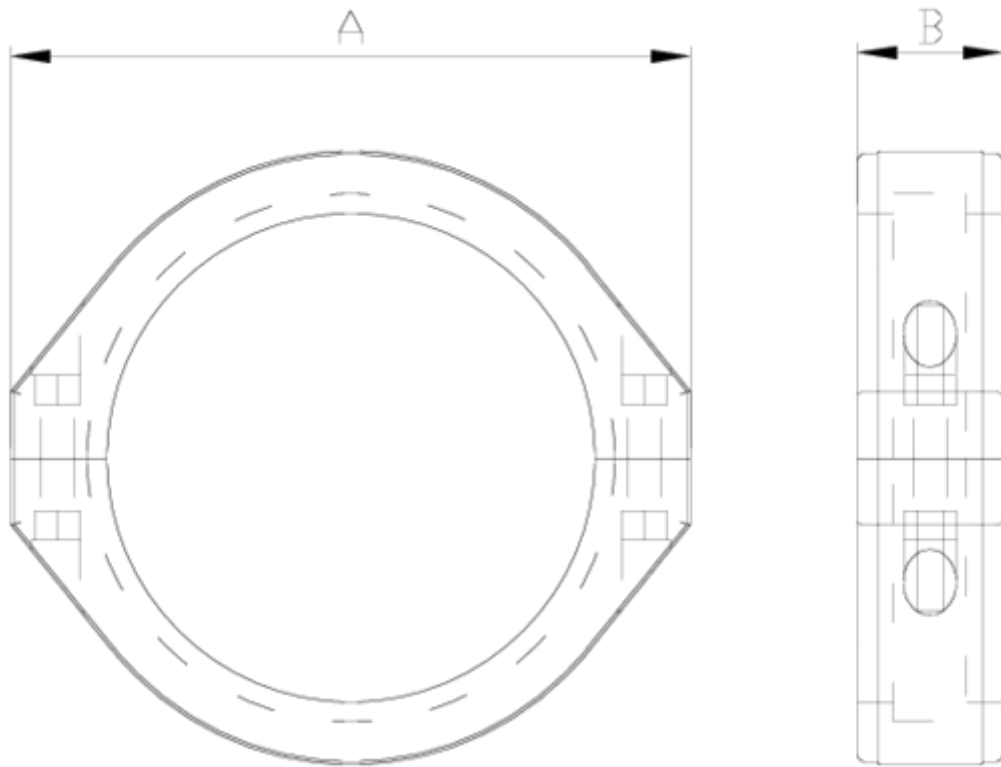
## Netvitec System pressure fittings

# Netvitec System flange

## ITEM 15N

REFERENCE	DESCRIPTION	Net weight	Volumen (m <sup>3</sup> )	Gross weight	Unidades lote
101N865	BRIDA ENLACE 3P NETVITC SYSTEM 125 C/BIS	0,499	0,01553	2,488	4
101N868	BRIDA ENLACE 3P NETVITC SYSTEM 200 C/BIS	1,158	0,01553	2,6427	2
101N909	PPGF NETVITC SYSTEM CLAMP 50	0,11	0,00472	0,93	8
101N910	PA NETVITC SYSTEM CLAMP 63	0,149738	0,00473	1,335	8
101N911	PPGF NETVITC SYSTEM CLAMP 75	0,173	0,00473	1,51	8
101N912	PA NETVITC SYSTEM CLAMP 90	0,35	0,00892	1,59	4
101N913	PA NETVITC SYSTEM CLAMP 110	0,3889	0,00892	1,775	4
101N914	PA NETVITC SYSTEM CLAMP 125	0,5201	0,00892	2,315	4
101N915	PA NETVITC SYSTEM CLAMP 140	0,6504	0,00892	2,789	4
101N916	PA NETVITC SYSTEM CLAMP 160	0,9245	0,00892	2,06	2
101N917	PA NETVITC SYSTEM CLAMP 200	1,19535	0,01553	2,745	2





## ITEM 15N | Netvitc System flange

CÓDIGO	f	PESO(g)	A	B	PN	MEDIDA
1N909	50	110	110	36	PN10	MÉTRICO
1N910	63	150	125	36	PN10	MÉTRICO
1N861	63	133	134	36	PN10	MÉTRICO
1N911	75	173	138	36	PN10	MÉTRICO
1N912	90	350	164	39	PN10	MÉTRICO
1N913	110	389	188	39	PN10	MÉTRICO
1N914	125	520	203	44	PN10	MÉTRICO
1N865	125	499	215	45	PN10	MÉTRICO
1N915	140	569	224	48	PN10	MÉTRICO
1N916	160	925	251	54	PN10	MÉTRICO



## ITEM 15N | Netvitc System flange

1N867	160	978	264	46	<b>PN10</b>	MÉTRICO
1N917	200	1195	297	59	<b>PN10</b>	MÉTRICO
1N868	200	1158	315	61	<b>PN10</b>	MÉTRICO



## Product Documents



## Product Certificates

## Company Certificates

