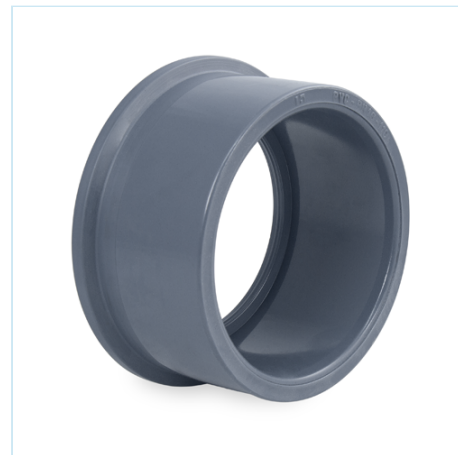


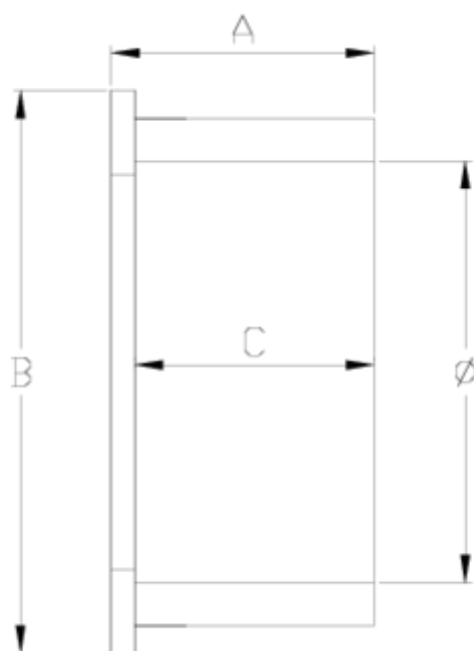


Netvitec System pressure fittings

Netvitec System adaptor, solvent socket ITEM 19N



| REFERENCE | DESCRIPTION | Net weight | Volumen (m ³) | Gross weight | Unidades lote |
|-----------|---------------------------------|------------|---------------------------|--------------|---------------|
| 101N977 | PVC NETVITEC SYSTEM ADAPTOR 63 | 0,102 | 0,00891 | 1,83 | 16 |
| 101N980 | PVC NETVITEC SYSTEM ADAPTOR 75 | 0.1422 | 0.015532 | 2.602 | 16 |
| 101N981 | PVC NETVITEC SYSTEM ADAPTOR 90 | 0,24095 | 0,00892 | 2,115 | 8 |
| 101N983 | PVC NETVITEC SYSTEM ADAPTOR 110 | 0,4725 | 0,01553 | 4,11 | 8 |
| 101N986 | PVC NETVITEC SYSTEM ADAPTOR 125 | 0,559038 | 0,02244 | 4,96 | 8 |
| 101N988 | PVC NETVITEC SYSTEM ADAPTOR 140 | 0.7714 | 0.031294 | 6.744 | 8 |
| 101N990 | PVC NETVITEC SYSTEM ADAPTOR 160 | 1,04925 | 0,02243 | 4,6847 | 4 |
| 101N992 | PVC NETVITEC SYSTEM ADAPTOR 200 | 1,77455 | 0,04717 | 7,74 | 4 |



ITEM 19N | Netvitc System adaptor, solvent socket

| CÓDIGO | f | PESO | BRIDA | A | B | C | PN | MEDIDA |
|--------|-----|------|-------|-----|-----|-----|------|---------|
| 1N977 | 63 | 102 | 63 | 40 | 92 | 43 | PN10 | MÉTRICO |
| 1N980 | 75 | 151 | 75 | 47 | 100 | 44 | PN10 | MÉTRICO |
| 1N981 | 90 | 241 | 90 | 54 | 121 | 50 | PN10 | MÉTRICO |
| 1N983 | 110 | 473 | 110 | 67 | 144 | 61 | PN10 | MÉTRICO |
| 1N986 | 125 | 559 | 125 | 79 | 159 | 70 | PN10 | MÉTRICO |
| 1N988 | 140 | 885 | 140 | 87 | 176 | 76 | PN10 | MÉTRICO |
| 1N990 | 160 | 1049 | 160 | 94 | 201 | 87 | PN10 | MÉTRICO |
| 1N992 | 200 | 1775 | 200 | 118 | 251 | 106 | PN10 | MÉTRICO |



Product Documents



Product Certificates

Company Certificates

