

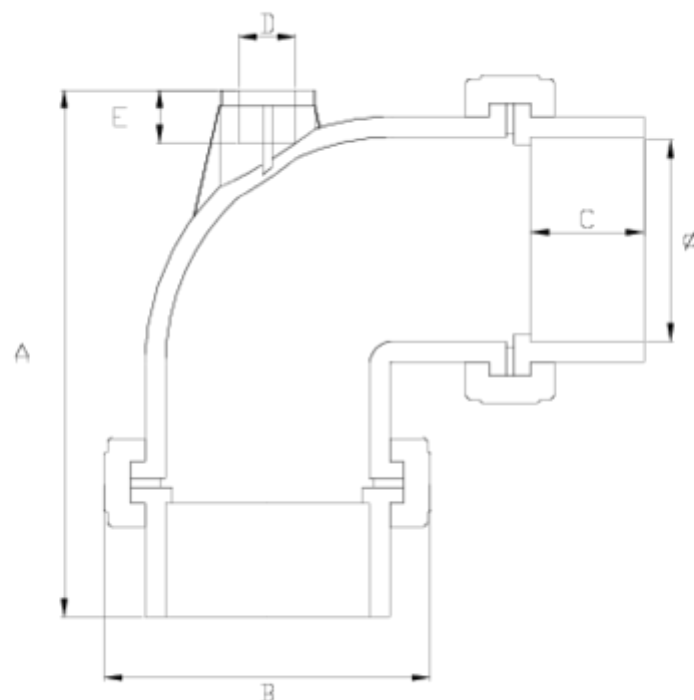


## Netvitc System pressure fittings

# "AIR" Netvitc 90° elbow W/F, solvent socket outlet ITEM 56N



REFERENCE	DESCRIPTION	Net weight	Volumen (m <sup>3</sup> )	Gross weight	Unidades lote
101N610	"AIR" NETVITC SYSTEM 90° ELBOW W/F S/SOCKET 90-25	2,031	0,04717	8,884	4
101N612	"AIR" NETVITC SYSTEM 90° ELBOW W/F S/SOCKET 110-32	2,981	0,04880	12,684	4
101N614	"AIR" NETVITC SYSTEM 90° ELBOW W/F S/SOCKET 125-63	3,995	0,06150	8,972	2
101N616	"AIR" NETVITC SYSTEM 90° ELBOW W/F S/SOCKET 160-63	7,11	0,04836	7,95	1
101N617	"AIR" NETVITC SYSTEM 90° ELBOW W/F S/SOCKET 200-63	11,175	0,06150	12,155	1



## ITEM 56N | "AIR" Netvitc 90° elbow W/F, solvent socket outlet

CÓDIGO	f	PESO	BRIDA	A	B	C	D	E	PN	MEDIDA
1N610	90	2031	90	234	164	52	25	21	PN10	MÉTRICO
1N612	110	2981	110	277	188	61	32	31	PN10	MÉTRICO
1N614	125	3995	125	330	203	69	63	36	PN10	MÉTRICO
1N616	160	7110	160	400	251	86	63	36	PN10	MÉTRICO
1N617	200	11175	200	473	297	107	63	36	PN10	MÉTRICO



## Product Documents



## Product Certificates

## Company Certificates

