



## Netvitc System pressure fittings

# GRPP "AIR" Netvitc System

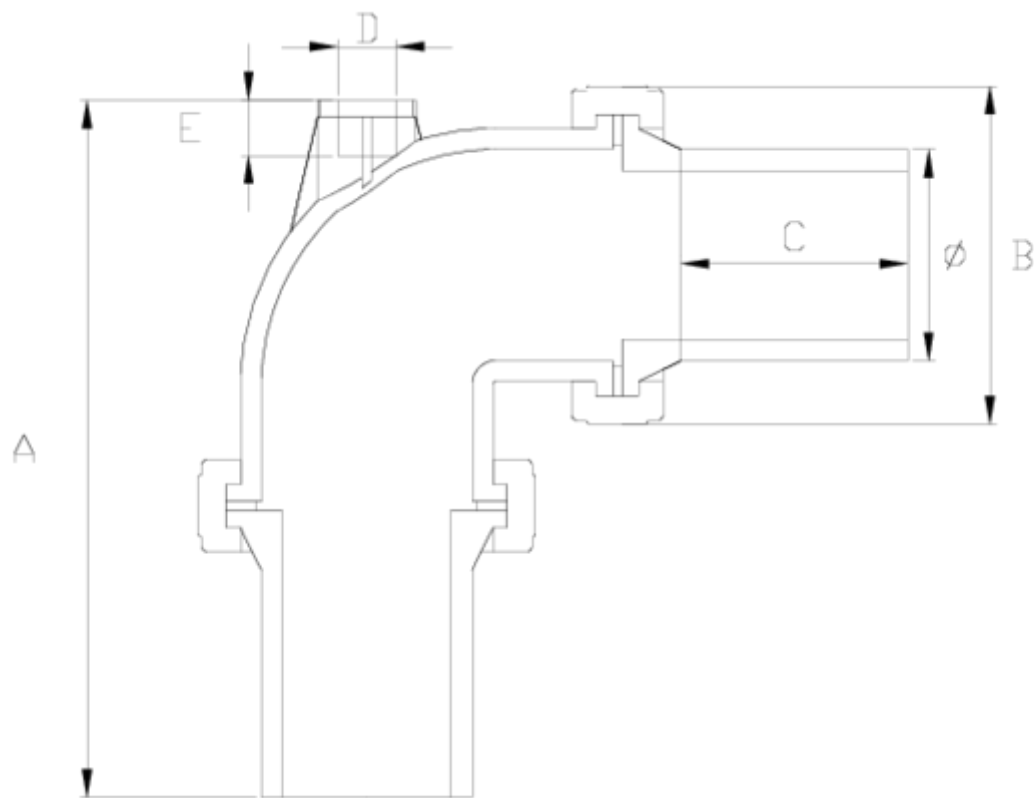
## 90° elbow W/F

### ITEM 29N



REFERENCE	DESCRIPTION	Net weight	Volumen (m <sup>3</sup> )	Gross weight	Unidades lote
101N315	PP "AIR" NET. SYST.90° ELBOW W/F 63-1/2"	0,89	0,01782	3,81	4
101N317	PP "AIR" NET. SYST.90° ELBOW W/F 90-3/4"	2,083	0,04717	8,97	4
101N319	PP "AIR" NET. SYST. 90° ELBOW W/F 110-1"	3,0265	0,06347	12,936	4
101N320	PP "AIR" NET. SYST. 90° ELBOW W/F 125-2"	4,12	0,06150	9,1605	2
101N322	"AIR" NETVITC SYSTEM 90° ELBOW W/F 160-2"	7,4233	0,06879	8,017	1
101N323	"AIR" NETVITC SYSTEM 90° ELBOW W/F 200-2"	11,93	0,06150	12,91	1





## ITEM 29N | GRPP "AIR" Netvitc System 90° elbow W/F

CÓDIGO	Ø	PESO	BRIDA	A	B	C	D	E	PN	MEDIDA
1N315	63	890	63	249	125	88	1/2"	17	PN10	MÉTRICO
1N317	90	2083	90	317	164	103	3/4"	21	PN10	MÉTRICO
1N319	110	2906	110	358	188	112	1"	31	PN10	MÉTRICO
1N320	125	4140	125	395	203	108	2"	36	PN10	MÉTRICO
1N322	160	7005	160	475	251	127	2"	36	PN10	MÉTRICO
1N323	200	11930	200	539	297	130	2"	36	PN10	MÉTRICO



## Product Documents



## Product Certificates

## Company Certificates

